



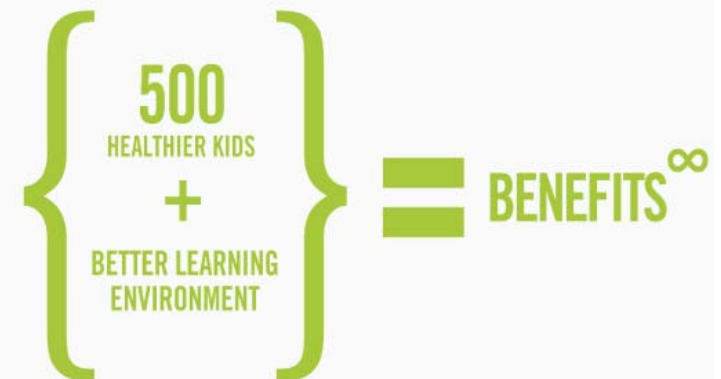
**BUILDING**  
*the* **VISION**  
Fort Worth ISD

**2007 FWISD Capital Improvement Program (CIP)**  
**A Commitment to Sustainable Design**

**Symposium – October 2, 2008**

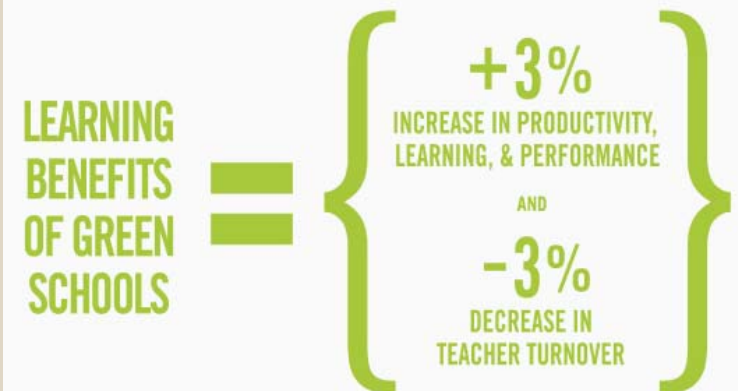
## • Our School District

- **Fort Worth ISD enjoys a diverse student population and strong community partnerships**
  - 80,000 students
  - 8 Board Member Districts
- **Our physical plant consists of**
  - 80 elementary schools
  - 24 middle schools and 6th grade centers
  - 13 high schools
  - 27 special campuses
- **62% of FWISD Schools are over 50 years old**
- **Our expectation is that all Fort Worth ISD students will attend schools that are caring and have supportive learning communities**



- **Our Teachers & Staff**

- **Fort Worth ISD strives to create a work atmosphere for its teachers that is collaborative, supportive and stimulating**
  - 5,003 teachers
  - 6,374 other staff
- **A productive learning environment depends on the ability of our teachers to share ideas and best practices and to have access to the most up-to-date training in the field of education**
- **Students and Teachers are entitled to safe and healthy school sites and building environments**



- **Parents and Community**

- **Parents are the primary educators and support system for students**
- **Community involvement in a child’s education is crucial to success inside and outside of the classroom**
- **Schools that follow “green” guidelines can contribute to the improvement of our community’s environment by minimizing waste, air and water pollution, etc.**



**One of our goals is to build new sustainable buildings and renovate existing buildings for community use and enjoyment during off hours**

# What we expect from sustainability



- **Academic Improvement**

- When learning environments are
  - naturally lit
  - thermally comfortable and
  - well maintained
- Student achievement is greater
- Attendance is higher
- Teacher retention is improved



- **Operational Efficiencies**

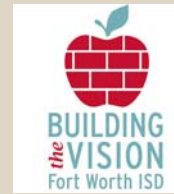
- Schools should employ design, construction and operation strategies that minimize long-term operational costs, in particular for energy and water use

- **“Green” Partnerships**

- Partnerships with Federal, State and Local Utility programs that support and encourage sustainable design, operational practices and potential savings.

The Board of Education of the FWISD approved the first sustainable design policy for a Texas School District

# Our Commitment to Sustainable Design

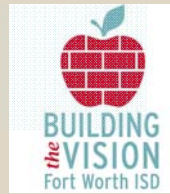


- **Revision to local Board Policy**
  - Facilities Construction for sustainable design approved in May 2008
- **Background**
  - The CIP provides a unique opportunity to move beyond traditional design towards high performance buildings
  - The sustainable design policy is consistent with the strategic goals of Vision 2010.
  - The design must be organized, in a judicious way with consideration of approved budgets
- **Content**
  - The policy directs staff to research, define and implement minimum sustainable design criteria into the CIP projects



**New sustainable sites and buildings will be completed in 2010 and 2011**

# CIP Outline



- **Objectives**

- Improve school safety and security
- Renovate critical building systems
- Emphasis on classroom technology
- Comparable classrooms & schools district wide
- Modernize Athletic Facilities
- **Build New Sustainable/Cost Effective Schools**

- **Scope**

- Renovations to all existing schools and athletic facilities
- **342 new classrooms**
  - 6 new schools
  - 8 new additions

- **Budget**

- Overall: \$593.6M
- Construction: \$551.9M
- New Schools: \$172.9M



# CIP Time Line

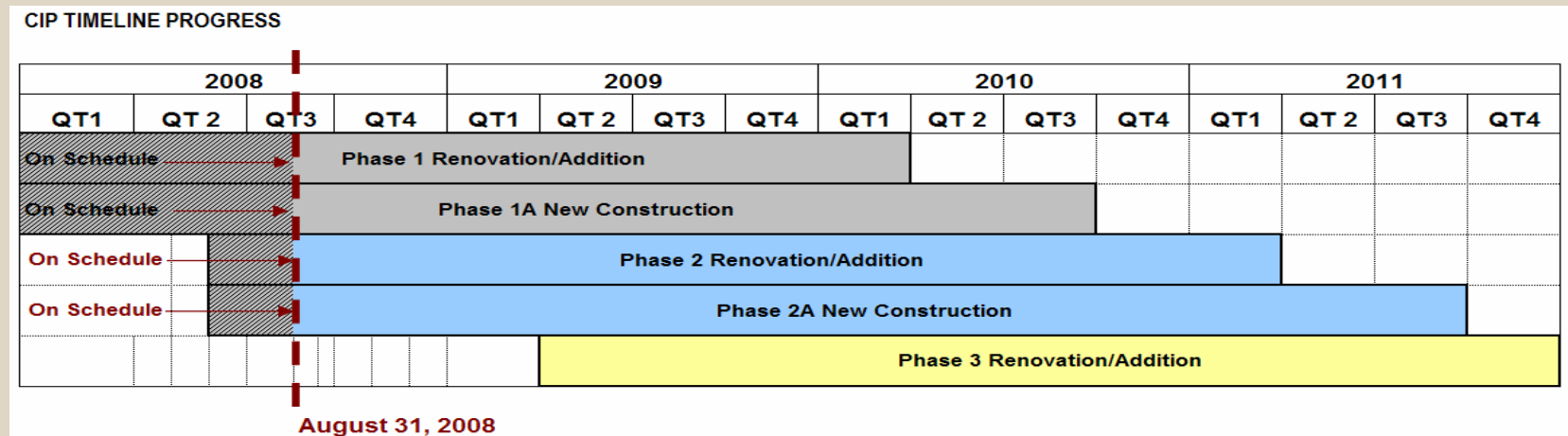


## PRELIMINARY TIME LINE

	2007	2008				2009				2010				2011				
	QT4	QT1	QT 2	QT3	QT4	QT1	QT 2	QT3	QT4	QT1	QT 2	QT3	QT4	QT1	QT 2	QT3	QT4	
Ph 1 Renov.	AE Sel/Award	Design Phase			GC Procure	Construction Phase			Final Insp	Close Out								
Ph 1 New Const	AE Sel/Award	Design Phase			GC Procure	Construction Phase			Final Insp	Close Out								
Ph 2 Renov.	AE Selection			AE Award	Design Phase		GC Procure	Construction Phase			Final Insp	Close Out						
Ph 2 New Const	AE Selection			AE Award	Design Phase		GC Procure	Construction Phase			Final Insp	Close Out						
Ph 3 Renov.	AE Selection						AE Award	Design Phase		GC Procure	Construction Phase		Final Insp	Close Out				Program Close Out

The Program Schedule is in process. The above time line is preliminary and subject to change.

## Progress to Date

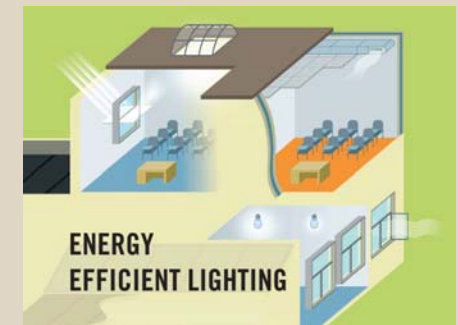
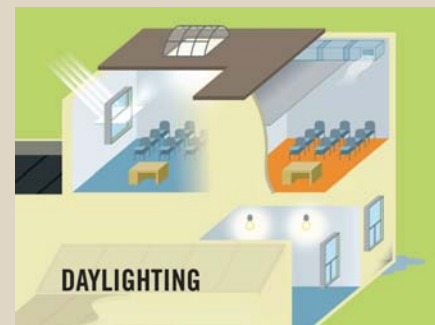


# Our Challenges...or Opportunities



- **New Buildings**

- **Budget constraints**
- **Market experiencing significant price escalation**
- **Industry development**
- **Revising the District’s Design Criteria**
  - **As an example, adding Geothermal systems as an acceptable option**
- **Defining what makes sense for FWISD today and in the near future**
  - **Using the new buildings and sites to educate students about “green” features**
  - **Creative approach at minimal cost**
  - **Increasing the commitment to other areas beyond construction**



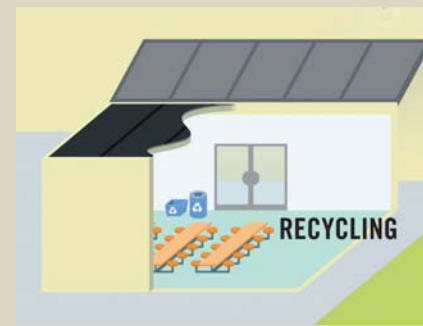
# Our Challenges...or Opportunities



- Existing Buildings

- Same as new buildings plus
- Compatibility between old/new systems
- Existing inventory
- Training of maintenance staff
- Operational changes
- User acceptance

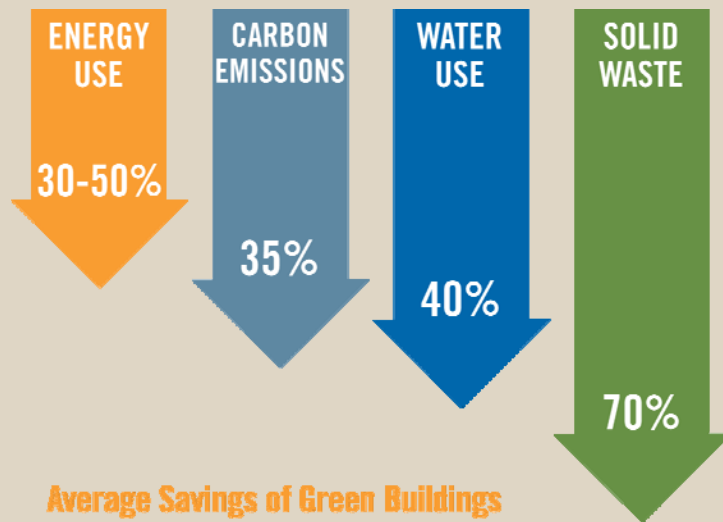
**Finding strategies to optimize existing buildings and systems**



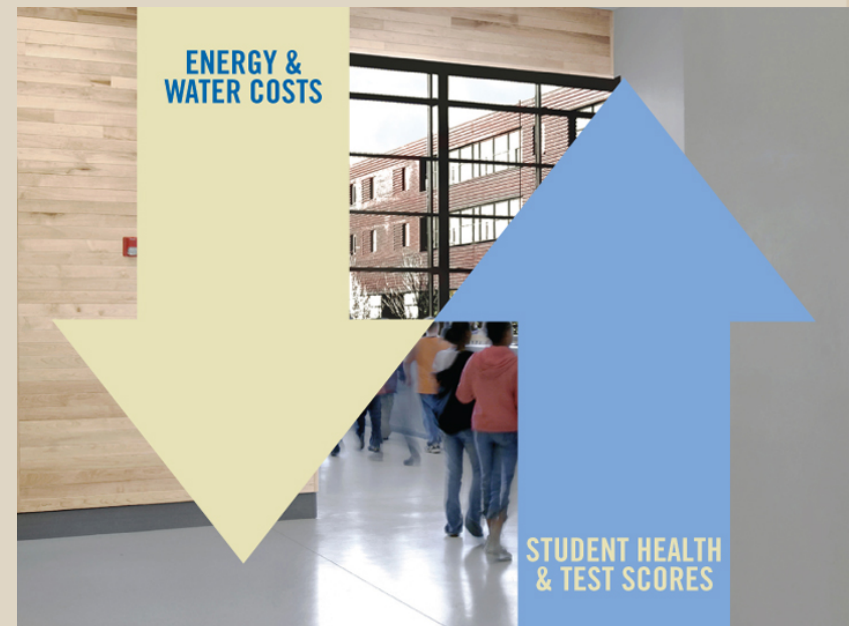
# Why is Sustainability necessary to us?



- The savings and efficiencies are important



- But this is the real reason why we care



Green Schools  
are Springing Up  
Everywhere

LEED Certified: **95**

Registered: **813**



**BUILDING**  
*the* **VISION**  
Fort Worth ISD

## Where are we right now?

- Working with AECOM our program manager and the Architect teams
  - First “green” elementary school is at 50% Construction documents
- Participating in CHPS Texas
  - Industry forums - seminars
- Sharing information with school districts and agencies
  - Developing collaborations
- A “green” approach to doing business
  - Recycled materials, light sensors, etc.
- Reaffirming our commitment to sustainable design

**Stay tuned...**